

Hydraulic tools

engcon offers a wide range of hydraulic tools. Thanks to EC-Oil, you can sit in the comfort of you cab and easily switch between tools.





Sweeper roller



- ▶ For excavators in the 6–33 ton weight classes.
- ▶ Expands possibilities in various specialized areas.
- ▶ Useful for sweeping soil, sand, gravel, snow, brushing grassed areas, foundations, rocks, and more.
- ▶ Ideal for sweeping in crossings, pedestrian walkways and railway points.
- ▶ Available without EC-Oil upon request.



Detachable sweepers



- ▶ For excavators in the 4–19 ton weight class with quick couplers S40–60.
- ▶ The sweepers are flexible and its width can be adjusted to suit the job in hand – from cable sweeping to clearing large areas of sand, soil, snow or gravel for example.
- ▶ Manual quick coupling quickly connects the hydraulics and locks the sweeper to the tiltrotator.
- ▶ Included brushes: SWD40: 320mm, SWD45: 420mm, SWD60: 420mm.



Unique engcon innovation!

Elevate your experience with our detachable sweepers. Available in three different widths.



Combi/timber grabs

- ▶ For all excavators in the 4–33 ton weight classes.
- ▶ The combi gripper proves to be the ultimate tool for efficiently handling round timber, pipes, and performing light sorting tasks.
- ▶ Grab tip wear bars with 400 Brinell hardness for best durability.
- ▶ Grab arms in high-strength steel for increased life.
- ▶ Available without EC-Oil upon request.



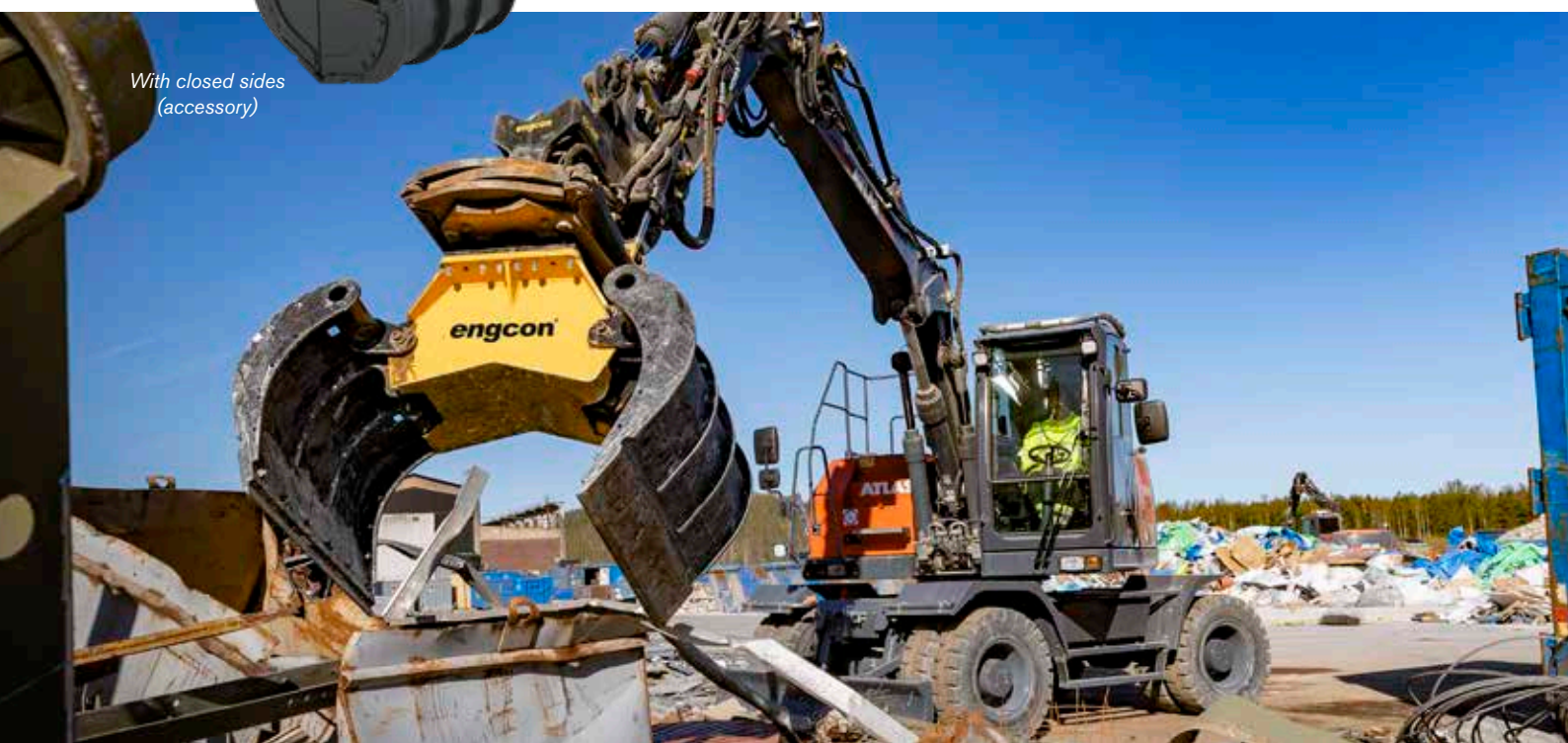
*With teeth
(accessory)*

Stone/sorting grabs

- ▶ For all excavators in the 1.5–33 ton weight classes.
- ▶ Suitable for everything from sorting to light demolition works where a powerful grapple is needed.
- ▶ The grapple's claws are fitted with reversible wear edges.
- ▶ Available with tooth kit for better grip.
- ▶ Available with closed sides to convert the grapple into a clamshell bucket.
- ▶ Available without EC-Oil upon request.



*With closed sides
(accessory)*



Detachable grippers



- ▶ For excavators in the 4-30 ton weight class with quick couplers S40-70.
- ▶ engcon's detachable gripper cassette can easily be added to existing equipment.
- ▶ The gripper is angled 15 degrees to the tiltrotator, providing an extended reach for enhanced functionality.
- ▶ Locking the cassette and connecting the hydraulics can be completed in less than a minute.



Pallet forks

- ▶ Hydraulic and mechanical pallet forks for excavators in the 2–33 ton weight class.
- ▶ Lightweight pallet forks are available for excavators in the 2-6 tonne weight classes.
- ▶ Hydraulic pallet forks are operated from the cab thanks to EC-Oil quick coupler system (Available without EC-Oil upon request.)
- ▶ Mechanical pallet forks are held in position with robust catches, and fork positions are adjusted manually.
- ▶ Forged forks for increased durability and service life.



NOTE! Check safety instructions for pallet fork use on specific machine. Use load-holding valve with tiltrotator. engcon tiltrotators are fitted with load holding valves on tilt cylinders.



Grapple Saw



- ▶ For excavators in the 7–26 ton weight class.
- ▶ Stay in the cab and connect the grapple saw with EC-Oil, cut your branches and lower them to the ground safely and securely.
- ▶ Automatic chain tensioning and proportional lubrication system.
- ▶ Fast and easy saw bar and chain replacement.
- ▶ SuperCut minimizes down time and increases productivity.
- ▶ Built in bar feed cylinder.
- ▶ Sequence controlled saw function.
- ▶ Saw activating valve included.
- ▶ Simple installation on excavator.



Compactors



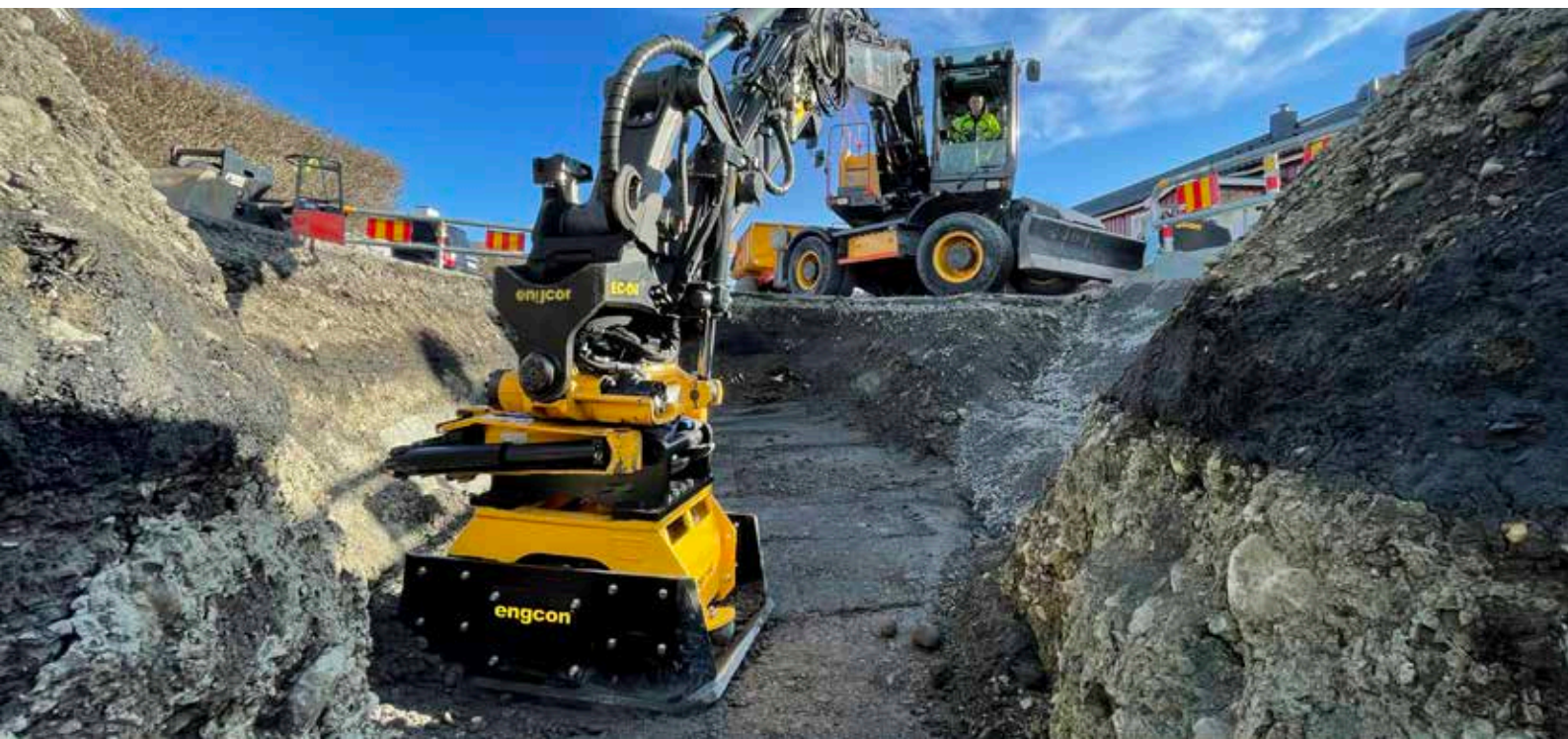
- ▶ For excavators in the 6–33 ton weight class.
- ▶ Safety is enhanced when no one has to enter an excavation at risk of soil collapse caused by vibrations.
- ▶ More areas of use with tiltrotators where it was previously impossible to work, such as on steep inclines or embankments.
- ▶ engcon recommends coupler S45 for PP3200, S60 for PC6000, S70 or S80 for PC9500.
- ▶ Available without EC-Oil upon request.



New product: PC9500!

We are thrilled to introduce PC9500 – a compactor designed for the bigger machines.

*Product on the picture: PC9500.
Visit our website to see all compactors available.*



Mechanical tools

engcon offers a wide range of high-quality mechanical tools designed to enhance and streamline your work, ensuring efficiency and precision on the job.





Cable bucket

- ▶ For excavators in the 1.5–33 ton weight class.
- ▶ Developed for precision excavation with minimal width, suitable for cables or other services requiring narrow trenches.
- ▶ Available in two models – standard and tapered.
- ▶ Cutters and other exposed wear surfaces have a hardness of 500 Brinell.
- ▶ A factory-installed tooth kit is available as an optional extra for enhanced functionality.

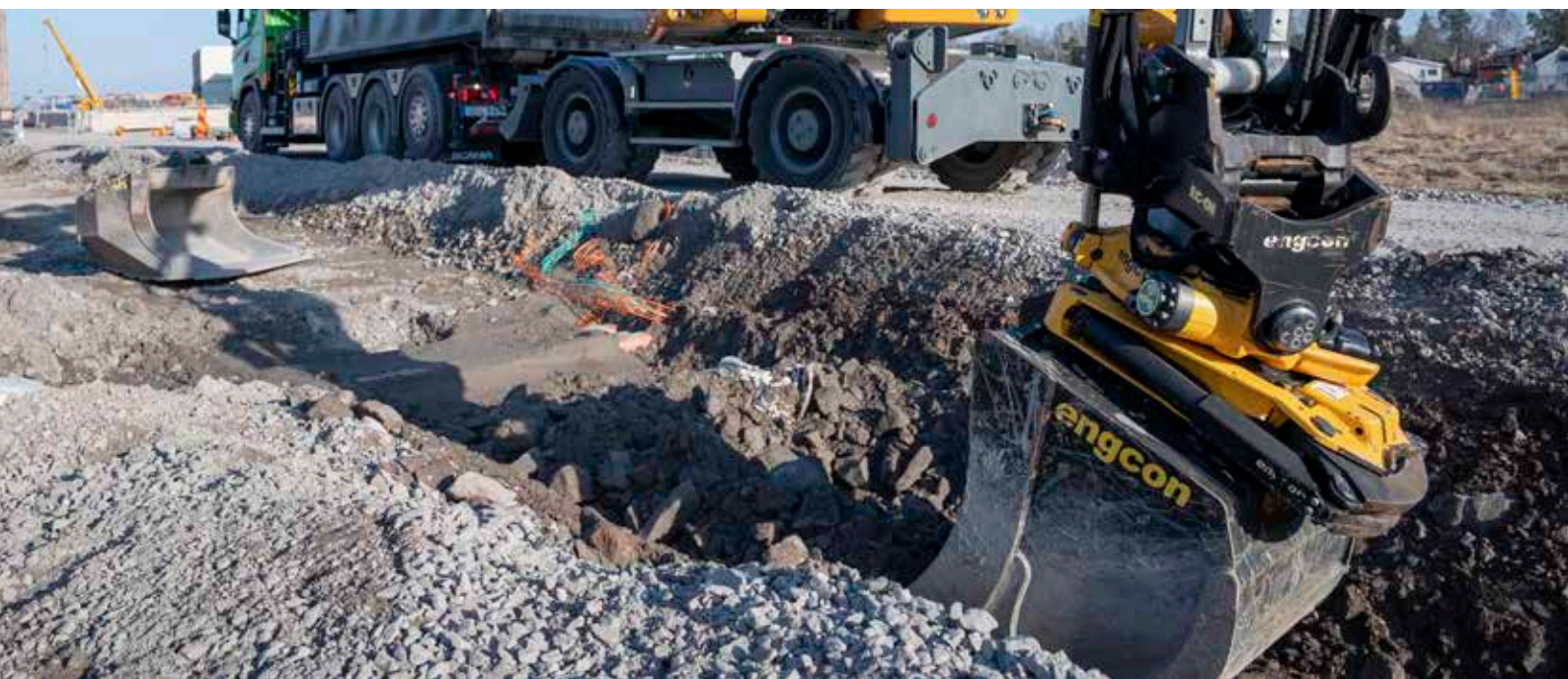


Deep-digging bucket

- ▶ For excavators in the 1.5–33 ton weight class.
- ▶ Ideal for jobs in difficult conditions where fast penetration and easy filling are priorities.
- ▶ Particularly preferred for trenching and soil removal tasks requiring high capacity.
- ▶ Can be fitted with various accessories upon request to enhance functionality: Tooth kit*, tooth cover, blade teeth.



* When selecting a tooth kit, engcon buckets are fitted with the Cat system as standard equipment. For other tooth systems, check availability with engcon.



Water/drainage bucket



- ▶ For excavators in the 8–23 ton weight class.
- ▶ Specially designed for excavating water/sewerage trenches and other utility tasks.
- ▶ Features a deep-digging bucket with a slightly longer base.
- ▶ Equipped with a cutter without teeth.
- ▶ Reinforced with Hardox at the most exposed points, ensuring durability and longevity.



Sorting bucket

- ▶ For all excavators in the 1.5–33 ton weight class.
- ▶ Designed for quick and simple sorting tasks.
- ▶ Cutters, lower side plates, and ribs are made of high-strength wear bar with a hardness of up to 500 Brinell.
- ▶ Designed for a long service life, contributing to durability and reliability.





Innovative Gripper-Compatible Bucket Series Boosts Object Support!

Available as standard since 2023.

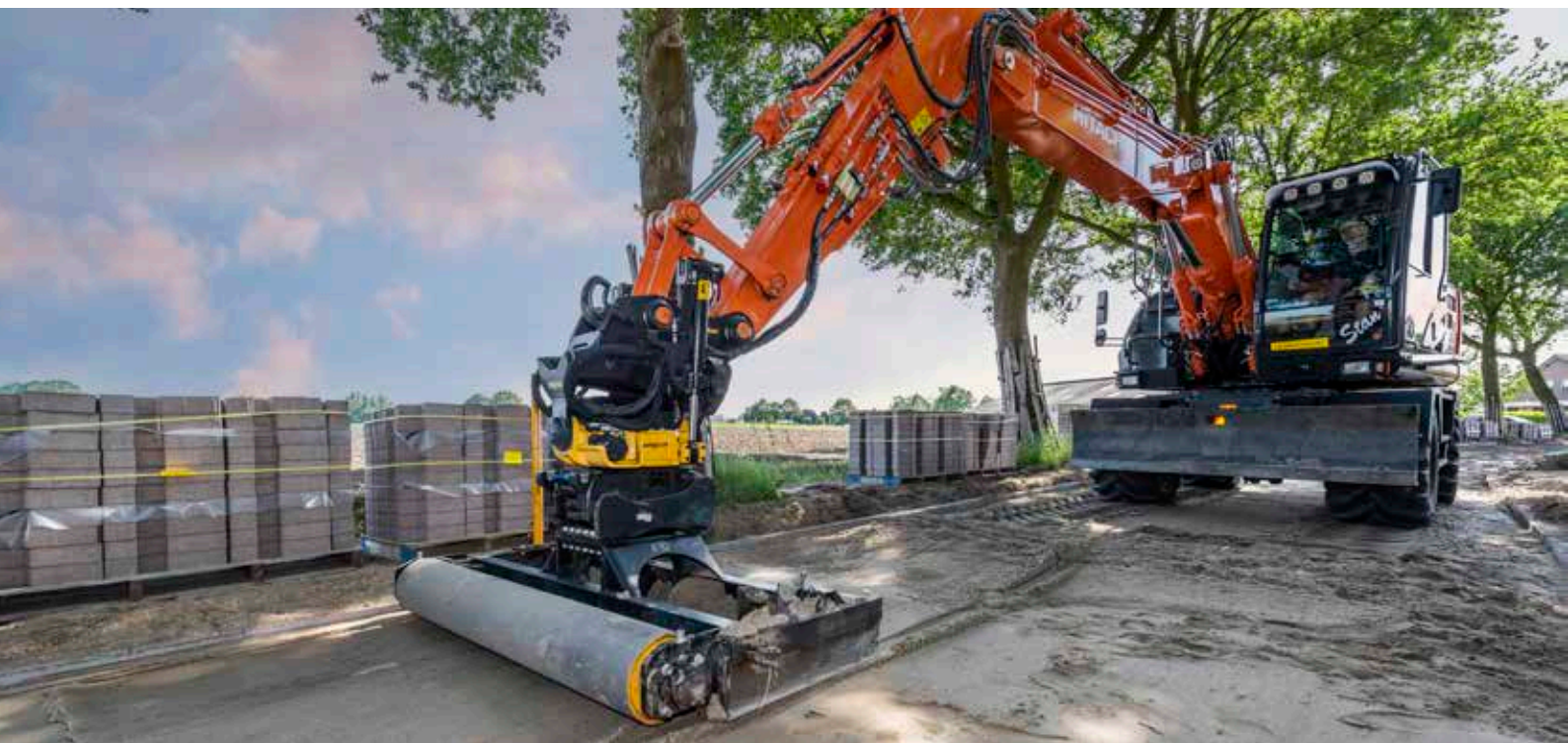
Grading bucket

- ▶ For excavators in the 1.5–33 ton weight class.
- ▶ The gripper-friendly bucket series features a rear bucket panel with a notch aligning with the gripper's counterhold. This design enhances support for grasped objects such as posts or pipes.
- ▶ Rounded corners designed to prevent collisions, particularly beneficial when excavating next to walls.
- ▶ Tiltrotator-adapted ceiling angle.
- ▶ Hardox-reinforcements on other wear surfaces.
- ▶ Conical shape for easier filling and better release.
- ▶ Wear and cutting steel – 500 Brinell hardness.



Tarmac cutter

- ▶ For excavators in the 1.5–33 ton weight class.
- ▶ Making high-quality cuts and avoiding unnecessary asphalt removal costs.
- ▶ Suitable for precise cuts on grass surfaces and other locations requiring accuracy.



Pallet fork



- ▶ Hydraulic and mechanical pallet forks for excavators in the 2–33 ton weight class.
- ▶ Lightweight pallet forks are available for excavators in the 2-6 tonne weight classes.
- ▶ Hydraulic pallet forks are operated from the cab thanks to EC-Oil quick coupler system.
- ▶ Mechanical pallet forks are held in position with robust catches, and fork positions are adjusted manually.
- ▶ Forged forks for increased durability and service life.



NOTE! Check safety instructions for pallet fork use on specific machine. Use load-holding valve with tiltrotator. engcon tiltrotators are fitted with load holding valves on tilt cylinders.

Grading beam



- ▶ For excavators in the 2–33 ton weight class.
- ▶ Enables quick and efficient grading of large areas.
- ▶ Available in five different widths – caters to a wide range of grading requirements.
- ▶ The journaled compactor roller can be raised and lowered to achieve the best setting for your particular needs.
- ▶ Extendable side beams with 500 mm bolt-on extensions providing a versatile solution.
- ▶ Smart, flexible design with a bolt-on bracket/attachment point sharing the same bolt pattern as other engcon tools.



Ripper



- ▶ For excavators in the 1.5–33 ton weight class.
- ▶ Designed for effortless penetration of frozen and hard ground.
- ▶ Optimized for superior ripping ability and breakout force in hard materials.
- ▶ Back shield to support when prying against softer material.



Control systems



Control system

- ▶ engcon's proportional control system DC2 is suitable for most machines on the market.
- ▶ Controls up to six proportional functions as standard and a further 14 on/off functions with engcon's joysticks.
- ▶ Option of track control, wheel steering, boom slew, VA-boom, outriggers and blade control.
- ▶ Function settings and tools can be adjusted using an android phone/tablet with the Microprop App via Bluetooth for up to four different operators.



Locking system

- ▶ engcon's intelligent, safe locking system comes as standard on engcon tiltrotators and optional extras for the machine coupler.
- ▶ Standardizes excavator operation, regardless of make and model.
- ▶ Features self-guidance lock panel.
- ▶ Enhances tool change safety with ground pressure sensor, and includes visual/audible warning for connection.



Light and sound module

- ▶ engcon's secure quick coupler, combined with the light/sound module, warns both visually and audibly if not safe connected.
- ▶ The module is installed on the left side of the excavator's stick, with integrated wiring in the control system cabling.
- ▶ If a control system other than DC2 is utilized, separate wiring for the warning module to the excavator cab can be arranged.



Joysticks



Enjoy your work with good ergonomics and functionality



engcon's excavator joysticks seamlessly integrate comfort, efficiency, and functionality while adhering to improved safety and control requirements. Developed in collaboration with operators and industrial design specialists, each joystick can be fitted with three rollers and seven buttons, providing twice the controls of two-lever setups. This design allows operators to work at maximum efficiency, minimizing physical strain and reducing stressful working positions.

The joystick includes an integrated hand support for wrist comfort without compromising excavator movements, featuring a flexible and adjustable hand rest suitable for different hand sizes. Beyond ergonomic considerations, engcon's joystick introduces new capabilities for operators, with rollers designed for the thumb, index, and middle fingers, enabling simultaneous control of six rollers when necessary.

engcon Positioning System

Together with the excavator guidance system, engcon Positional System reduces the need for conventional setup. The driver can see the excavation area via the machine control system's display in the cab. This control, allowing the driver to excavate the correct amount of material, comes with many benefits.



Benefits with ePS

- ▶ Reduced job time.
- ▶ Reduced fuel consumption.
- ▶ Reduced wear on machines and tools.
- ▶ Saves time for other units, such as trucks/dumpers.
- ▶ Adapted to the engcon proportional system but also possible to install on other control systems.
- ▶ Completely independent of model or make of control system via own cabling.
- ▶ Possible to order/retrofit on all tiltrotators from EC204 and up.

engcon has standardised ePS sensors on tiltrotators EC214-EC233**. The advantage is that rotation and the tilt angle can be obtained for integrated, aftermarket installed machine control systems.* The use of standard sensors makes retrofitting ePS more straightforward. ePS is available as an option for EC204 and EC209 tiltrotators.

* This through our machine control rated sensors
** Depending on market. Contact your local sales office for more information.



Attachment brackets



Bolt-on bracket with EC-Oil block



Weld-on bracket with EC-Oil block



EC-Oil bracket



Adapt to fit your existing tools



Attachment brackets EC-Oil

- ▶ For excavators in the 4–40 ton weight class.
- ▶ Bucket/attachment bracket adapted to EC-Oil connectors.
- ▶ Standard bolt pattern that fits engcon hydraulic tools or weldable bracket.
- ▶ Possible to equip with one or two EC-Oil blocks.
- ▶ Easy to adapt for all types of hydraulic tools.
- ▶ Robust, reliable and value-for-money.
- ▶ Constructed in high strength steel.



Attachment brackets

- ▶ For excavators in the 1.5–33 ton weight class.
- ▶ Easy-to-modify buckets for engcon couplers.
- ▶ Robust, reliable and affordable.
- ▶ Welded, high-strength steel.



Technical data

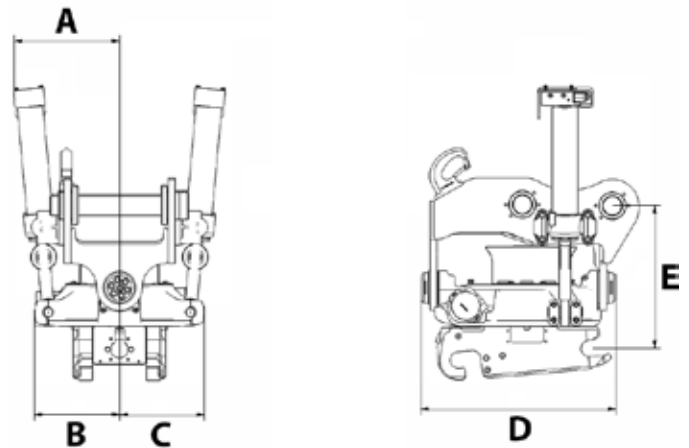
Tiltrotators

Specifications	EC02	EC204	EC206	EC209	EC214	EC219	EC226	EC233
Width A: (mm)*	180	267	286	277	320	396	426	501
Width B: (mm)*	155	161	220	250	285	315	340	385
Width C: (mm)*	160	169	219	273	303	310	340	385
Total length D: (mm)*	435	463	500	561	665	737	760	878
Build height E: (mm)*	245	310	380	425	457	480	500	673
Weight: (kg)*	77	116	170	287	385	447	632	812
Tilt:	2x40°	2x45°	2x45°	2x45°	2x45°	2x45°	2x45°	2x45°
Rec. hydraulic flow DC2/SS10 (l/min):	25	30	40	60	80	120	120	120
Rec. hydraulic flow SS9 tilt/rotation: (l/min):	7/20	10/25	15/30	35/40	35/50	65/70	70/70	70/70
Max hydraulic pressure: (MPa)	22	22	22	22	22	22	22	25
Standard mounting:	S30	S40	S40, S45	S45	S45, S60	S60	S70	S70, S80
Max bucket width rec engcon: (mm)	900	1 000	1 200	1 300	1 600	1 700	2 000	2 200
Max breakout torque: (kNm)	20	28	45	74	126	186	270	340
Base machine weight: (t)	1,5–2,5	2–4	4–6	6–9	9–14	14–19	19–26	24–33

* Standard attachment

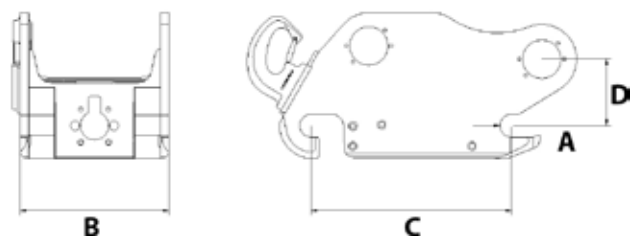
Tiltrotator storage and transport stand

Specifications	
Length: (mm)	1200
Width: (mm)	800
Height without attachment point: (mm)	150
Weight without attachment point: (kg)	82



Automatic quick couplers

Specifications	S40	S45	S60	S70	S80
Axle diameter A: (mm)	40	45	60	70	80
Width B: (mm)	200	290	340	450	590
Length C: (mm)	300	430	480	600	670
Build height D: (mm)	135	140	170	190	270
Weight*: (kg)	50	100	180	290	370
Recommended hydraulic pressure open/closed (MPa)	21-25	21-25	21-25	21-25	21-25
Max hydraulic pressure: (MPa)	35	35	35	35	35
Base machine weight: (t)	2-6	6-11	12-19	20-30	27-40

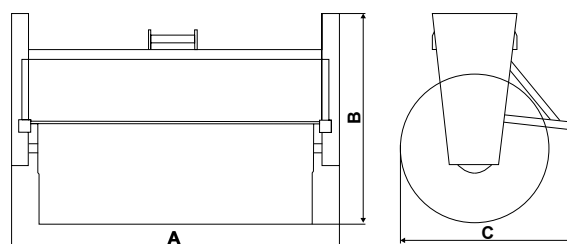


* Depending on attachment point

Technical data may vary. We reserve the right to make changes without prior notice. Please direct any questions to your local engcon office.

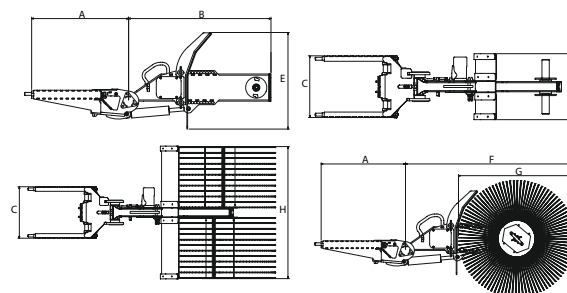
Sweeper rollers

Specifications	SR800	SR1300	SR1600	SR1800	SR2000
Min hydraulic flow min/max:	20/60	20/60	20/60	20/60	20/60
Weight excl attachment point: (kg)	210	240	260	275	290
Width A: (mm)	800	1 300	1 600	1 800	2 000
Height B: (mm)	1 257	1 257	1 257	1 257	1 257
Length C: (mm)	1 060	1 060	1 060	1 060	1 060



Detachable sweepers

Specifications	SWD40	SWD45	SWD60
Length, cassette A: (mm)	451	586	665
Length, arm B: (mm)*	843	875	975
Width, cassette C: (mm)	314	362	423
Width, guard D: (mm)**	340/1 200	450/1 400	450/1 600
Height, guard E: (mm)	660	660	660
Max total length A+F (mm)**	1 550	1 710	1 998
Diameter, sweeper brush G: (mm)***	600/700	600/700	600/700/915
Width, sweeper brush H: (mm)	340/1 200	420/1 400	420/1 600
Maximum weight: (kg)*,**	127	186	210
Oil flow min/max: (l/min)	20/50	20/60	20/60
Fits quick coupler:	S40	S45	S60



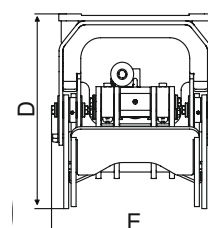
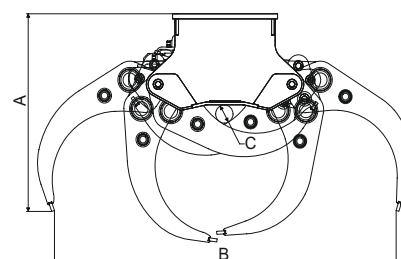
* In the standard version

** Depends on sweeper brush

*** 915 mm can only be used with long arm (975 mm)

Combi/timber grabs

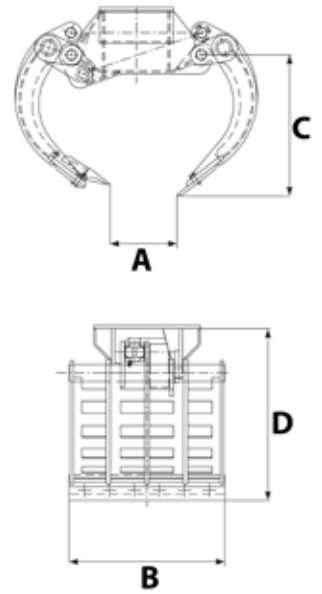
Specifications	TG25HD	TG28HD	TG42HD	TG55HD
Height fully open, A: (mm)	759	889	1 039	1 146
Grab width max, B: (mm)	1 450	1 540	2 080	2 510
Grab width, min: (mm)	42	93	82	151
Height fully closed, D: (mm)	526	659	751	946
Width E: (mm)	460	595	677	802
Clamping force (tip - tip) at 21 MPa (kN)	6,8	12,4	20,4	31,9
Max hydraulic pressure: (MPa)	22	22	22	22
Weight: (kg)	195	360	526	1 070
Grab area, C: (m ²)	0,25	0,28	0,42	0,55
Max load (kg)	3 000	5 000	6 000	10 000
Recommended machine weight: (t)	4-9	9-14	12-19	19-33



Stone/sorting grabs

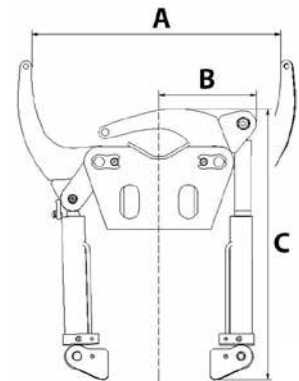
Specifications	SG03	SG06	SG09	SG12	SG19	SG26	SG33
Grab width max, A: (mm)	750	1 110	1 365	1 660	1 790	1 990	2 575
Grab width min, A: (mm)	0	0	0	0	0	0	0
Cutting width B: (mm)	400	505	628	715	860	860	1 170
Length C: (mm)	490	460	539	680	790	870	1 180
Height D: (mm)	550	580	748	790	960	1 070	1 360
Volume, with side plates: (l)	42	83	137	220	336	420	930
Grab force: (kN)	5,7	8,7	14	15	19	25	45
Max hydraulic pressure: (MPa)	22	22	22	22	22	22	22
Weight: (kg)*	108	180	268	425	646	755	1 400
Grab area: (m ²)	0,12	0,17	0,24	0,34	0,42	0,52	0,85
Base machine weight (t)	1,5-3	3-6	6-9	10-12	12-19	18-26	24-33
Recommended tiltrotator:	EC02	EC204 EC206	EC206 EC209	EC209 EC214	EC214 EC219	EC219 EC226	EC226 EC233

* Depending on attachment point.



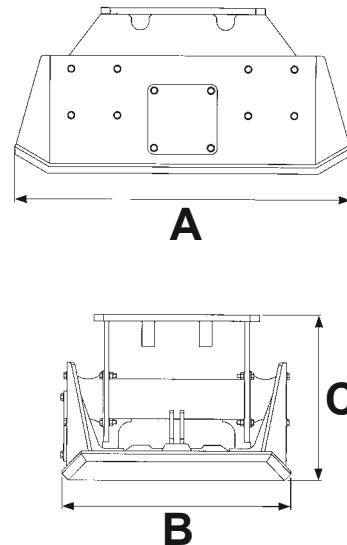
Detachable gripper

Specifications	GRD40	GRD45	GRD60	GRD70
Grab width A: (mm)	430	610	820	950
Width B: (mm)	220	270	355	410
Length C: (mm)	540	720	870	900
Gripping force (tip to tip) at 3200 psi: (kN)	1200	1 500	2 200	2 200
Max load: (kg)	1000	1 500	2 000	2 000
Weight: (kg)*	45	99	153	169
Max hydraulic pressure: (MPa)	22	22	22	22
Fits quick coupler:	S40	S45	S60	S70



Compactors

Specifications	PP3200	PC6000	PC9500
Width (mm)	500-700	720	900
Height (without top bracket) (mm)	590	508	630
Length (mm)	1000	1065	1318
Weight (excluding adapter) (kg)	470	560	970
Recommended hydraulic flow from [l/min]:	34	55	65
Compaction area [m ²]:	0.4-0.56	0,61	0,86
Compaction force [kN]:	3 200	60	95
Max hydraulic pressure [bar]:	22	210	210
Max rec return hose pressure [bar]:	2.5	20	20
Frequency [Hz]:	31	35	35



Grapple saw

Specifications	MG12	MG12	MG20
Grab width A, min: (mm)	82	82	179
Grab width A, max: (mm)	1 496	1 496	2 279
Width B: (mm)	454	454	531
Height C: (mm)	910	910	1 163
Weight: (kg)	315	315	560
Grab area: (m ²)	0,26	0,26	0,52
Max hydraulic pressure: (MPa)	25	25	25
Max load: (kg)	6 000	6 000	10 000
Fits coupler:	S45	S60	S70
Base machine weight: (t)	7-12	12-19	19-26

Pallet forks (hydraulic)

Specifications	GHH1200	GHH1200L	GHH1200L
Width: (mm)	1,200	1,200	1,200
Fork: (mm)	125x45x1 200	100x40x1 200	125x45x1 200
Weight: (kg)*	400	260	313
TP500 (t)	4.7	2.9	4.7

* Depending on coupler

Lightweight pallet forks (hydraulic)

Specifications	GHH1000L
Base machine weight (t)	2-6
Standard coupler	S40 with EC-Oil
Weight (kg)	151
Fork (mm)	80x40x800
Width (mm)	1000
Length (mm)	800 (1200 also available)
TP500 (t)	2

Cable buckets

Specifications	CB01	CB03	CB03	CB05	CB05	CB08	CB10	CB15	CB15C	CB20	CB20	CB25	CB25	CB29	CB29
Volume: (l)	35	90	90	130	130	155	160	350	350	400	400	550	550	800	800
Width: (mm)	240	290	290	340	340	400	460	560	300	660	660	600	600	700	700
Weight: (kg)	25	55	55	70	85	95	160	290	255	320	360	590	615	744	777
Attachment point:	S30	S30	S40	S40	S45	S45	S45	S60	S60	S60	S70	S70	S80	S70	S80
Base machine weight [t]:	1,5-2	2-4	2-4	4-6	4-6	6-10	8-13	13-17	13-17	17-22	17-22	22-27	22-27	27-33	27-33

Water & drainage buckets

Specifications	TB07	TB07	TB09	TB12	TB14	TB16	TB18
Volume: (l)	250	250	350	500	600	700	900
Width: (mm)	600	600	700	800	800	900	900
Weight: (kg)	202	213	250	340	510	550	750
Attachment point:	S40	S45	S45	S60	S60	S60	S70
Base machine weight [t]:	8-11	8-11	8-11	11-13	13-15	15-17	15-18

Deep-digging bucket

Specifications	DB02	DB02	DB03	DB05	DB06	DB07	DB09	DB11	DB12	DB13	DB14	DB16	DB18	DB21	DB26	DB29	DB32
Volume: (l)	70	90	120	160	200	250	350	400	500	600	650	750	900	1100	1400	1,600	1800
Width: (mm)	450	550	550	600	600	700	700	700	800	850	900	1000	1000	1100	1300	1450	1700
Weight: (kg)	50	60	75	100	125	210	230	280	330	500	520	600	680	940	1330	1440	1720
Attachment point:	S30	S40	S40	S40	S40	S45	S45	S45	S60	S60	S60	S60	S60	S70	S70	S70	S80
Base machine weight [t]:	1,5-3	1,5-3	2-4	4-6	5-7	6-8	8-10	10-12	11-13	11-13	13-16	15-17	17-20	19-22	24-27	27-31	31-33

Sorting bucket (SB)

Specifications	SB02	SB02	SB04	SB06	SB06	SB08	SB11	SB14	SB15	SB17	SB20	SB24	SB29
Volume: (l)	90	130	200	300	300	370	500	650	750	900	1 100	1 400	1 600
Width: (mm)	900	900	1 000	1 200	1 200	1 300	1 400	1 600	1 600	1 700	1 700	2 000	2 000
Diameter: (mm)	22	22	22	22	22	30	30	30	45	45	45	45	45
Gap: (mm)	40	40	50	50	50	50	50	50	65	70	70	70	70
Weight: (kg)	80	91	144	166	177	292	320	442	628	697	920	1 046	1 268
Attachment point:	S30	S40	S40	S40	S45	S45	S45	S60	S60	S60	S70	S70	S70
Base machine weight [t]:	1,5-3	1,5-3	2-4	6-7	6-7	7-9	9-12	13-14	14-16	16-18	18-22	22-26	26-33

Sorting bucket (SKB)

Specifications	SKB02	SKB04	SKB06	SKB09	SKB14	SKB17	SKB23	SKB29
Volume: (l)	70	170	220	400	620	850	1 300	1550
Width: (mm)	600	600	800	1 000	1 300	1 300	1 500	1 500
Gap: (mm)	44	41	47	51	62	62	62	62
Weight: (kg)	49	108	166	291	496	604	1 072	1 231
Attachment point:	S30	S40	S45	S45	S60	S60	S70	S70
Base machine weight [t]:	1,5-3	2-4	6-7	7-12	13-14	16-18	22-26	26-33

Grading bucket

Specifications	GB02	GB02	GB03	GB04	GB05	GB05	GB06	GB06	GB08	GB08
Volume: (l)	90	130	150	200	250	250	300	300	370	400
Width: (mm)	900	900	1 100	1 000	1 200	1 200	1 200	1 200	1 300	1 400
Weight: (kg)	75	80	110	135	145	155	155	160	260	260
Attachment point:	S30	S30	S40	S40	S40	S45	S40	S45	S45	S45
Base machine weight [t]:	1,5-3	1,5-3	1,5-3	2-4	4-5	4-5	6-7	6-7	7-9	7-9

Specifications	GB11	GB13	GB14	GB15	GB17	GB20	GB24	GB29	GB29
Volume: (l)	450	600	650	750	900	1 100	1 400	1 600	1 600
Width: (mm)	1 400	1 600	1 600	1 600	1 700	1 700	2 000	2 000	2 000
Weight: (kg)	320	450	460	660	700	980	1 150	1 460	1 490
Attachment point:	S45	S60	S60	S60	S60	S70	S70	S70	S80
Base machine weight [t]:	9-12	12-13	13-14	14-16	16-18	18-22	22-26	26-33	26-33

Grading beam

Specifications	GRB1250	GRB1500L	GRB1500	GRB2000	GRB2500	GRB3000
Width (mm):	1 250	1 500	1 500	2 000	2 500	3 000
Depth without extensions (mm):	962	962	1 000	1 000	1 000	1 000
Height without top bracket (mm):	275	275	387	387	387	387
Roll diameter (mm):	178	178	245	245	245	245
Weight (kg):	195	233	306	482	563	645
Base machine weight (t):	2-9	2-11	2-11	2-18	6-30	20-33

Pallet forks (mechanic)

Specifications	GH1000	GH1200
Width: (mm)	1000	1,200
Fork: (mm)	100x40x1 200	125x45x1 200
Weight: (kg)*	180	350
TP500 (t)	2.9	4.7
Base machine weight (t):	4–33	4–33

Lightweight pallet fork (mechanic)

Specifications	GH1000L
Standard coupler	S40
Weight (kg)	141
Fork (mm)	80x40x800
Width (mm)	1 000
Length (mm)	800
TP500 (t)	2
Base machine weight (t)	2–6

Tarmac cutters

Specifications	TC03	TC06	TC12	TC19	TC33	TC33
Diameter: (mm)	370	370	470	470	470	470
Cutting depth: (mm)	100	100	150	150	150	150
Weight: (kg)	30	40	55	70	90	110
Attachment point:	S30/180	S40	S45	S60	S70	S80
Base machine weight [t]:	3–6	3–6	6–12	11–19	18–33	18–33

Rippers

Specifications	R06	R06	R12	R19	R26	R26	R33	R33
Height: (mm)	600	600	700	900	1 200	1 200	1 400	1 400
Weight: (kg)	50	65	110	170	370	410	680	720
Attachment point:	S30	S40	S45	S60	S60	S70	S70	S80
Base machine weight [t]:	1,5–6	1,5–6	6–12	11–19	11–26	11–26	18-33	18-33

Issue: 202403
Part no: 900 00 94



engcon International Box 111, SE-833 22 Strömsund, Sweden
Phone +46 670 17800 | E-mail international@engcon.com | Web www.engcon.com

**CHANGE
THE WORLD OF
DIGGING**